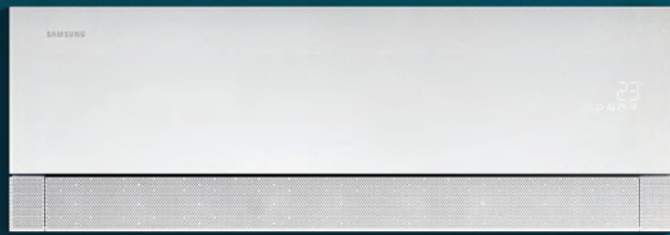


SAMSUNG



WindFree Première series

Enhance your living experience



Scan to visit the website



Refined aesthetics, excellent performance

Discover our new residential air conditioning series. Introducing a new design identity, expanded airflow options and enhanced connected control, offering solutions for different residential applications.



A+++

WindFree Première+ A+++/A+++
WindFree Première A+++/A++

The new portfolio includes the new top-class WindFree Première+ and WindFree Première. Samsung's new Grid Design is introduced exclusively within the WindFree Première series, created to harmonise with a wide range of interior styles. These indoor units come in Essential White and Soapstone Charcoal. While retaining the trusted WindFree™ Cooling mode, it delivers the same gentle, draft-free comfort with a more efficient micro-holes design¹.

The WindFree Première models deliver enhanced airflow control and trusted sensing, while the WindFree Première+ adds AI operation to optimise performance.

¹ The WindFree Première+ and WindFree Première deliver the same trusted WindFree™ performance as previous models (e.g., the 2025 AR9500T), now supported by a 10% larger air intake area.

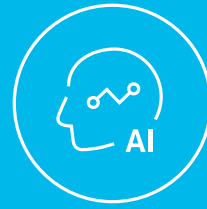
² AI= Artificial Intelligence. A Wi-Fi connection and Samsung SmartThings application account are required. Requires iOS 10.0 or later & Android 5.0 or later.



Radar Sensor with
AI-driven airflow



7 Motion Winds*



WindFree™ Cooling &
AI Auto Comfort



4-in-1 filter:
premium filtration



SmartThings connectivity



WindFree™ low noise

* WindFree Première offers 5 motion winds, excluding AI Direct and Indirect wind.

Radar Sensor with AI-driven airflow

The WindFree Première+ is upgraded with a radar-based motion sensor which accurately senses distance, angle and the activity of up to two people³. It enables AI-driven⁴ airflow adjustment for efficient and precise climate control when AI Auto Comfort mode is on. When no movement is detected, the system issues an alert and automatically switches to energy-saving mode, supporting optimised operation and reduced energy consumption.

³ Radar-based sensor detects up to two people

⁴ AI=Artificial Intelligence. A Wi-Fi connection and Samsung SmartThings application account are required. Requires iOS 10.0 or later & Android 5.0 or later.

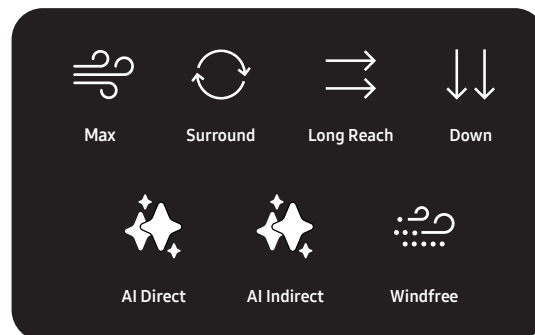


AI Motion Wind

WindFree Première+ is equipped with AI Motion Wind, an intelligent airflow system that automatically adapts to people's movement in the room. Using advanced motion detection, the unit adjusts airflow direction and intensity in real time — delivering cooling exactly where it's needed or avoiding direct airflow when desired. This creates a more personalised and energy-efficient comfort experience.

Powered by Samsung's triple-blade Motion Wings system⁵, each blade operates independently depending on the selected mode. The redesigned airflow structure enlarges the air inlet by 10%⁶ and enables faster air discharge by 15%⁷, while offering a wider adjustment range for both vertical and horizontal angles⁸.

Première+ offers seven airflow programmes, including two AI-powered modes: AI Direct Wind (airflow toward occupants) and AI Indirect Wind (redirects airflow away). This intelligent combination of motion sensing and precision airflow control ensures optimal comfort tailored to real-life living patterns. WindFree Première offers five airflow programmes, ideal for bedrooms or compact living areas.



⁵ Motion Wings consist of two outer blades (top & bottom) and one inner blade.

⁶ The intake areas increased by 10% compared to the 2025 models (AR9500T).

⁷ Based on internal testing comparing model AR70H12CAAWNEU with AR12TXCAAWNEU

⁸ Adjustment range expanded from 30–80° (45°) to front 0–90° and bottom –70–0°

Fast Cooling
WindFree™ Cooling

- Indoor Temperature
- Setting Temperature
- Outdoor Temperature
- Operating Time
- Usage Pattern

Temperature

WindFree™ Cooling & AI Auto Comfort

The Première models include the trusted WindFree™ Cooling mode, delivering the same gentle, draft-free comfort with a more efficient micro-holes design⁸. This results in a “Still Air” environment⁹ with low air speed and limited noise¹⁰, supporting even cooling across larger areas. AI Auto Comfort supports intelligent climate management¹¹ by analysing room

conditions, usage patterns¹², preferred temperatures and outdoor temperatures, and selects the appropriate mode, such as WindFree™, Fast Cooling, Normal Cooling or heating to support consistent indoor conditions. Voice control is available through Bixby 2.0¹³, enabling hands-free operation.

⁸ The WindFree Première+ and WindFree Première deliver the same trusted WindFree™ performance as previous models (e.g., the 2025 AR9500T), now supported by a 10% larger air intake area.

⁹ ASHRAE (the American Society of Heating, Refrigerating, and Air-Conditioning Engineers) defines “Still Air” as air currents moving at speeds below 0.15 m/s, with no cold drafts.

¹⁰ Tested on the AR12TXCAAWKNEU model in an anechoic environment. WindFree™ mode generates 23 dB(A) of noise, compared to 26 dB(A) produced by the conventional Samsung model. Sound pressure level is a relative value, depending on the distance and acoustic environment. Sound pressure level may differ according to operating conditions.

¹¹ AI = Artificial Intelligence. Wi-Fi and Samsung SmartThings account required.


¹² System stores user preferences and usage patterns to suggest temperatures between 22–26 °C.

¹³ Bixby availability varies by region/language. Wi-Fi & Samsung account required.

4-in-1 filter: premium filtration

WindFree Première+ and WindFree Première feature a 4-in-1 filter system, evolving from Samsung's Tri-Care Filter. The system includes a high-density, silver zinc zeolite-coated layer¹⁴ to capture PM2.5 fine dust particles. It is designed to help reduce fine dust, allergens, and selected types of viruses and bacteria in the air¹⁵.

¹⁴ Silver zinc zeolite is an approved substance by the European Chemicals Agency. Source: <https://echa.europa.eu/information-on-chemicals/biocidal-active-substances/-/disas/factsheet/1385/PT09>
¹⁵ Data has been measured under specific testing conditions and may vary depending on environmental factors and individual use. >99% antibacterial reduction verified by Intertek based on Staphylococcus aureus and Escherichia coli test. >99% antiviral reduction verified by Korea Research Institute of Bioscience based on Influenza virus H1N1 test. >99% anti-allergy reduction verified by Institute of Tokyo Environmental Allergy based on cedar pollen test. >99% PM2.5 fine dust reduction verified by Korea Institute of Industrial Technology based on ISO A2 fine dust particles test.



4 in 1

99%

1. PM2.5 Reduction
2. Anti-Bacteria
3. Anti-Virus
4. Anti-allergy



WindFree™ Low Noise

The WindFree Première models operate at an ultra-low noise¹⁶ level of just 16 dB(A)^{17,18} in their lowest setting, while WindFree™ mode runs at only

23 dB(A)^{17,18}, still quieter than a typical library of 40 dB(A). This ensures a calm and undisturbed environment, making the WindFree™ range perfect for bedrooms and quiet places.

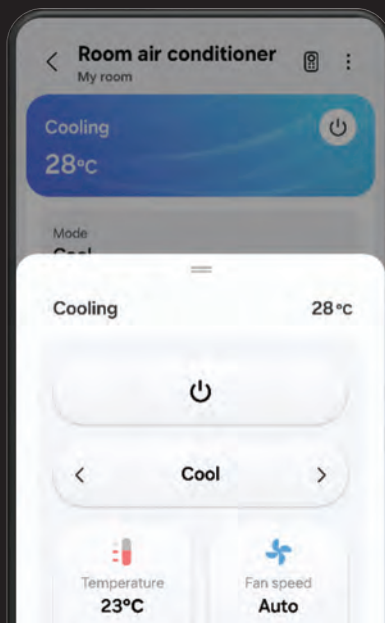
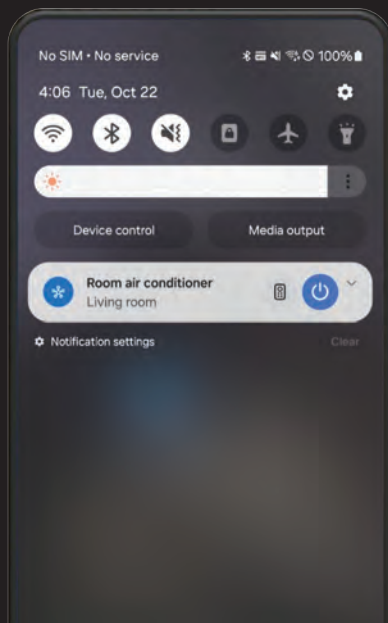
Environment	Noise Level (dB(A))
Expressway	70 dB(A)
Library	40 dB(A)
Bedroom	30 dB(A)
Whisper (WindFree™)	23 dB(A)
Whisper (Quiet mode)	16 dB(A)

¹⁶ Compared to decibel levels of equivalent products within the market.
¹⁷ Tested in an acoustic space, measured at a 1-meter distance.
¹⁸ Only applicable to WindFree™ indoor units 2/2.5/3.5 kW.

SmartThings connectivity

The new Residential Air Conditioner line-up supports remote monitoring and control via the SmartThings app¹⁹. Users can turn the unit on or off, adjust temperature settings, schedule operation, and monitor energy usage.

¹⁹ A Wi-Fi connection and Samsung SmartThings application account are required. Requires iOS 10.0 or later & Android 5.0 or later.



WindFree Première +


Indoor Unit Soapstone Charcoal			AR70H09CAABNEU	AR70H12CAABNEU
Indoor Unit			AR70H09CAAWNEU	AR70H12CAAWNEU
Outdoor Unit			AR70H09CAAWXEU	AR70H12CAAWXEU
Capacity				
Cooling (Nominal)	kW		2,5	3,5
Cooling (Min-Max)	kW		1,0 - 4,0	1,0 - 4,8
Heating @ +7 °C	kW		3,2	4,0
Heating (Min-Max)	kW		0,8 - 7,1	0,8 - 7,3
Heating @ -5 °C	kW		4,8	5,2
Heating @ -10 °C	kW		4,2	4,8
Heating @ -15 °C	kW		3,6	4,2
Performance				
Energy Efficiency Cooling	SEER ¹	W/W	9,7 A+++	9,0 A+++
	Power Consumption	kWh/a	90	136
	Pdesignc	kW	2,5	3,5
	EER	W/W	4,81	4,12
Energy Efficiency Heating	SCOP ¹	W/W	5,1 A+++	5,1 A+++
	Power Consumption	kWh/a	659	659
	Pdesignh (average)	kW	2,4	2,4
	COP ¹	W/W	4,74	4,26
Moisture Removal	l/h		0,9	1,4
Maximum Airflow (Cooling)	Indoor Unit	m ³ /min	10	11
	Outdoor Unit	m ³ /min	45,0	45,0
Sound Power	Indoor Unit (Cooling)	dB(A)	56	58
	Outdoor Unit (Cooling)	dB(A)	59	62
Sound Pressure	Indoor Unit High/Silent Mode	dB(A)	38 / 16	40 / 16
	Outdoor Unit High	dB(A)	45	46
Operating Temperature Range	Cooling	°C	-10 - 46	-10 - 46
	Heating	°C	-15 - 24	-15 - 24
Electrical Data				
Power Source	Φ, V, Hz		10, 220-240 V, 50 Hz	10, 220-240 V, 50 Hz
Compressor Type	Outdoor Unit	Type	Twin Rotary	Twin Rotary
Power Consumption	Cooling	kW	0,52	0,85
	Heating	kW	0,68	0,94
Operating Current	Cooling	A	2,8	3,8
	Heating	A	3,1	4,2
Dimensions				
Net Dimensions (W x H x D)	Indoor Unit	mm	889 x 299 x 230	889 x 299 x 230
	Outdoor Unit	mm	790 x 548 x 285	790 x 548 x 285
Net Weight	Indoor Unit	kg	11,3	11,3
	Outdoor Unit	kg	30,5	30,5
Refrigerant				
Refrigerant	Type		R32 (contains fluorinated greenhouse gases. GWP= 675)	
	Charging (for 7.5 m)	kg	1,0	1,0
	Charging Ton Equivalent CO ₂	tCO ₂ e	0,65	0,65
	Additional Refrigerant Charging	g/m	15	15
Piping Connections	Liquid Pipe	ø, mm (inch)	6,35 (1/4)	6,35 (1/4)
	Gas Pipe	ø, mm (inch)	9,52 (3/8)	9,52 (3/8)
Piping Length	Min/Max (ODU to IDU)	m	3 / 20	3 / 20
Piping Height	Max	m	10	10
Piping Connections	Drain Pipe	ø, mm	ø16,3, 550 mm	ø16,3, 550 mm
Functions				
Airflow	AI Motion Wind		•	•
	Motion Wind		•	•
	WindFree™ Cooling		•	•
	Air Direction Control (Up/Down)		Auto	Auto
	Air Direction Control (Left/Right)		Auto	Auto
	Auto Fan Speed		•	•
Air Purification	4-in-1 Filter		•	•
	Easy Filter Plus		•	•
	Auto Clean (Self-Cleaning)		•	•
Operating Mode	AI Auto Comfort with Wi-Fi & Radar Sensor (direct/indirect)		•	•
	AI Auto Comfort with Wi-Fi		•	•
	Auto Mode (without Wi-Fi)		-	-
	Fast Cooling		•	•
	Good Sleep		•	•
	Eco		•	•
	Dehumidification		•	•
	Fan		•	•
	Quiet		•	•
Other Functions	Samsung SmartThings		•	•
	Radar Sensor		•	•
	Indoor Temperature Display		•	•
	Display On/Off	88 Display	•	•
	Beep On/Off		•	•
	Auto Changeover		•	•
Auto Restart		•	•	

Capacity


Single Split (RAC) - AR70H**C*AWXEU		Capacity (kW)					
Indoor unit		2	2.5	3.5	4.3	5	6.5
Première+ Essential White		-	•	•	-	-	-
Première+ Soapstone Charcoal		-	•	•	-	-	-
Première Essential White		•	•	•	•	•	•
Première Soapstone Charcoal		•	•	•	-	-	-

Multi Split (FJM) - AJ***TXJ*KG/EU		Capacity (kW)					
Indoor unit		2	2.5	3.5	4.3	5	6.5
Première+ Essential White		•	•	•	-	-	-
Première+ Soapstone Charcoal		•	•	•	-	-	-
Première Essential White		•	•	•	-	•	•
Première Soapstone Charcoal		•	•	•	-	-	-
Multi Split (FJM) - AJ***TXJ*KG/EU							
AJ040TXJ2KG/EU		•	•	•	-	-	-
AJ050TXJ2KG/EU		•	•	•	-	•	-
AJ052TXJ3KG/EU		•	•	•	-	•	-
AJ068TXJ3KG/EU		•	•	•	-	•	-
AJ080TXJ4KG/EU		•	•	•	-	•	•
AJ100TXJ5KG/EU		•	•	•	-	•	•

Controls and Accessories




Wireless SolarCell Remote Controller (included)




Advanced Wired Controller

MWR-WG01JN
MWR-WG01KN



Simple Type Controller

MWR-SH00N



Touch Controller

MWR-SH11N

¹ Energy labels as shown are according to EU No 626/2011 (LOT 10) label classification 2019, on a scale from D to A+++.

WindFree Première

Indoor Unit Soapstone Charcoal			AR70H07C1ABNEU	AR70H09C1ABNEU	AR70H12C1ABNEU	-	-	-
Indoor Unit			AR70H07C1AWNEU	AR70H09C1AWNEU	AR70H12C1AWNEU	AR70H15C1AWNEU	AR70H18C1AWNEU	AR70H24C1AWNEU
Outdoor Unit			AR70H07C1AWXEU	AR70H09C1AWXEU	AR70H12C1AWXEU	AR70H15C1AWXEU	AR70H18C1AWXEU	AR70H24C1AWXEU
Capacity								
	Cooling (Nominal)	kW	2,0	2,5	3,5	4,3	5,0	6,5
	Cooling (Min-Max)	kW	1,0 - 3,2	1,0 - 3,7	1,0 - 4,6	1,1 - 5,0	1,6 - 6,7	1,4 - 7,6
	Heating @ +7 °C	kW	2,2	3,2	4,0	4,7	6,0	6,9
	Heating (Min-Max)	kW	0,7 - 6,7	0,7 - 7,0	0,7 - 7,2	0,9 - 7,6	1,3 - 8,0	1,2 - 9,7
	Heating @ -5 °C	kW	4,1	4,6	4,8	5,1	5,7	6,6
	Heating @ -10 °C	kW	4,0	4,1	4,5	4,7	5,0	6,1
	Heating @ -15 °C	kW	3,5	3,5	4,0	4,2	4,3	5,2
Performance								
Energy Efficiency Cooling	SEER ¹	W/W	9,0/ A+++	8,8/ A+++	8,6/ A+++	8,2/ A++	7,2/ A++	7,0/ A++
	Power Consumption	kWh/a	78	99	142	184	243	325
	Pdesignc	kW	2,0	2,5	3,5	4,3	5,0	6,5
	EER	W/W	4,65	4,39	3,89	3,64	3,60	3,33
Energy Efficiency Heating	SCOP ¹	W/W	4,8/ A++	4,8/ A++	4,8/ A++	4,6/ A++	4,1/ A+	4,3/ A+
	Power Consumption	kWh/a	642	671	700	822	1.298	1.335
	Pdesignh (average)	kW	2,2	2,3	2,4	2,7	3,8	4,1
	COP ¹	W/W	4,78	4,21	3,74	3,73	3,73	3,73
Moisture Removal		l/h	0,7	0,9	1,4	1,7	1,9	2,3
Maximum Airflow (Cooling)	Indoor Unit	m ³ /min	8	8	9	13	14	17
	Outdoor Unit	m ³ /min	45,0	45,0	45,0	45,0	50,0	50,0
Sound Power	Indoor Unit (Cooling)	dB(A)	56	56	58	58	58	62
	Outdoor Unit (Cooling)	dB(A)	59	59	62	65	65	68
Sound Pressure	Indoor Unit High/Silent Mode	dB(A)	37 / 16	38 / 16	40 / 16	41 / 25	41 / 25	45 / 27
	Outdoor Unit High	dB(A)	45	45	46	48	51	54
Operating Temperature Range	Cooling	°C	-10 - 46	-10 - 46	-10 - 46	-10 - 46	-10 - 46	-10 - 46
	Heating	°C	-15 - 24	-15 - 24	-15 - 24	-15 - 24	-15 - 24	-15 - 24
Electrical Data								
Power Source	Φ, V, Hz		1Φ, 220-240 V, 50 Hz	1Φ, 220-240 V, 50 Hz	1Φ, 220-240 V, 50 Hz	1Φ, 220-240 V, 50 Hz	1Φ, 220-240 V, 50 Hz	1Φ, 220-240 V, 50 Hz
Compressor Type	Outdoor Unit	Type	Twin Rotary	Twin Rotary	Twin Rotary	Twin Rotary	Twin Rotary	Twin Rotary
Power Consumption	Cooling	kW	0,43	0,57	0,90	1,18	1,39	1,95
	Heating	kW	0,46	0,76	1,07	1,26	1,61	1,85
Operating Current	Cooling	A	2,3	3,0	4,0	5,2	6,4	8,8
	Heating	A	2,3	3,4	4,7	5,6	7,8	8,1
Dimensions								
Net Dimensions (W x H x D)	Indoor Unit	mm	889 x 299 x 230	889 x 299 x 230	889 x 299 x 230	889 x 299 x 230	1,055 x 299 x 230	1,055 x 299 x 230
	Outdoor Unit	mm	790 x 548 x 285	790 x 548 x 285	790 x 548 x 285	790 x 548 x 285	880 x 638 x 310	880 x 638 x 310
Net Weight	Indoor Unit	kg	10,5	10,5	10,5	10,5	13,3	13,3
	Outdoor Unit	kg	30,5	30,5	30,5	30,5	36,8	38,6
Refrigerant								
Refrigerant	Type		R32 (contains fluorinated greenhouse gases. GWP = 675)					
	Charging (for 7.5 m)	kg	1,0	1,0	1,0	1,0	1,3	1,3
	Charging Ton Equivalent CO ₂	tCO ₂ e	0,64	0,64	0,64	0,64	0,88	0,88
	Additional Refrigerant Charging	g/m	15	15	15	15	15	15
Piping Connections	Liquid Pipe	ø, mm (inch)	6,35 (1/4)	6,35 (1/4)	6,35 (1/4)	6,35 (1/4)	6,35 (1/4)	6,35 (1/4)
	Gas Pipe	ø, mm (inch)	9,52 (3/8)	9,52 (3/8)	9,52 (3/8)	9,52 (3/8)	9,52 (3/8)	9,52 (3/8)
Piping Length	Min/Max (ODU to IDU)	m	3 / 20	3 / 20	3 / 20	3 / 20	3 / 30	3 / 30
Piping Height	Max	m	10	10	10	10	15	15
Piping Connections	Drain Pipe	ø, mm	ø16,3, 550 mm	ø16,3, 550 mm	ø16,3, 550 mm	ø16,3, 550 mm	ø16,3, 550 mm	ø16,3, 550 mm
Functions								
Airflow	AI Motion Wind		-	-	-	-	-	-
	Motion Wind		•	•	•	•	•	•
	WindFree™ Cooling		•	•	•	•	•	•
	Air Direction Control (Up/Down)		Auto	Auto	Auto	Auto	Auto	Auto
	Air Direction Control (Left/Right)		Auto	Auto	Auto	Auto	Auto	Auto
	Auto Fan Speed		•	•	•	•	•	•
Air Purification	4-in-1 Filter		•	•	•	•	•	•
	Easy Filter Plus		•	•	•	•	•	•
	Auto Clean (Self-Cleaning)		•	•	•	•	•	•
Operating Mode	AI Auto Comfort with Wi-Fi & Radar Sensor (direct/indirect)		-	-	-	-	-	-
	AI Auto Comfort with Wi-Fi		•	•	•	•	•	•
	Auto Mode (without Wi-Fi)		-	-	-	-	-	-
	Fast Cooling		•	•	•	•	•	•
	Good Sleep		•	•	•	•	•	•
	Eco		•	•	•	•	•	•
	Dehumidification		•	•	•	•	•	•
	Fan		•	•	•	•	•	•
	Quiet		•	•	•	•	•	•
	Other Functions	Samsung SmartThings		•	•	•	•	•
	Radar Sensor		-	-	-	-	-	
	Indoor Temperature Display		•	•	•	•	•	
	Display On/Off	88 Display	•	•	•	•	•	
	Beep On/Off		•	•	•	•	•	
	Auto Changeover		•	•	•	•	•	
	Auto Restart		•	•	•	•	•	

¹ Energy labels as shown are according to EU No 626/2011 (LOT 10) label classification 2019, on a scale from D to A+++.

SAMSUNG

Find your flow.

Learn more about Samsung Climate Solutions at:
samsung-climatesolutions.com

Copyright © 2026 Samsung Electronics Air Conditioner Europe B.V. All rights reserved. Samsung is a registered trademark of Samsung Electronics Co., Ltd. Specifications and designs are subject to change without notice and may include preliminary information. Non-metric weights and measurements are approximate. All data was deemed correct at the time of creation. Samsung is not liable for errors or omissions. Some images may be digitally altered. All brand, product, service names and logos are trademarks and/or registered trademarks of their respective owners and are hereby recognised and acknowledged.



Samsung Electronics Co., Ltd. participates in the Eurovent Certification Programme (ECP) for Air Conditioners (AC), Variable Refrigerant Flow (VRF) and Liquid Chilling Packages Heat Pump (LCP-HP). To check the ongoing validity of certification, please visit: www.eurovent-certification.com

Samsung Electronics Air Conditioner Europe B.V.

Evert van de Beekstraat 310, 1118 CX Schiphol

P.O. Box 75810, 1118 ZZ Schiphol

+31 (0)8 81 41 61 00

The Netherlands